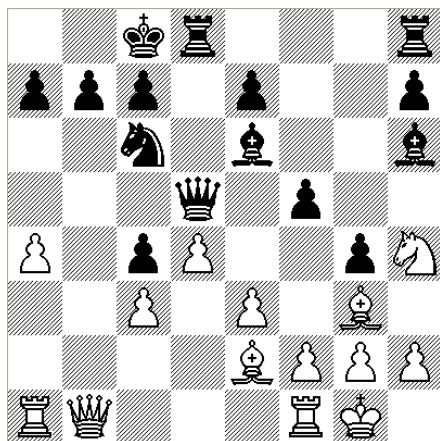


Nakamura in Barcelona Casino de Barcelona Tournament

Attacking With the King

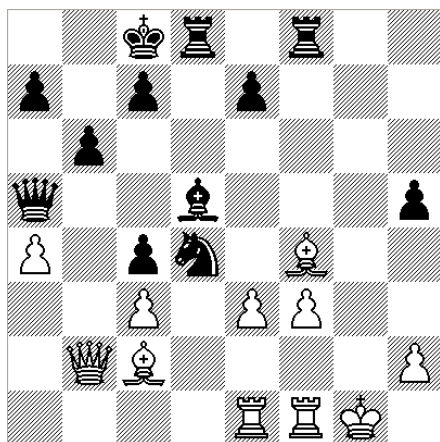
Hikaru Nakamura (USA) 2648 Jordi Fluvia (ESP 2508)

Round 1 - 2007.10.18 - ECO D80



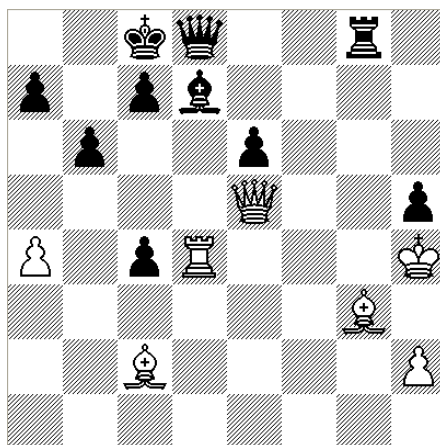
1. d4 Nf6 2. c4 g6 3. Nc3 d5 4. Bg5 Ne4 5. Bh4 Nxc3
6. bxc3 dxc4 7. e3 Be6 8. Qb1 Qd5 9. a4 Nc6
10. Nf3 Bh6 11. Be2 g5 12. Bg3 g4 13. Nh4 f5
14. O-O O-O-O

Fluvia makes his intentions clear – he is playing all out, playing for a win with the Black pieces, asking for no quarter and giving no quarter.



15. Bd1 Qa5 16. Bc2 Rhf8 17. Qb2 Bg5 18. Rab1 b6
19. Rbe1 Bxh4 20. Bxh4 Bd5 21. Bg3 h5 22. f3 gxf3
23. gxf3 f4 24. Bxf4 Nxd4?!?

With this move Fluvia initiates an intense King hunt that Nakamura will turn into a Attack using his King as an attacking piece.



25. cxd4 Rg8+ 26. Kf2 Qd2+ 27. Re2 Rg2+ 28. Kxg2 Qxe2+
29. Rf2 Rg8+ 30. Bg3 Bxf3+ 31. Kh3 Bg4+ 32. Kh4 Qxe3
33. Qb5 Qxd4 34. Qe5 Qd8 35. Rd2 Bd7 36. Rd4 e6+

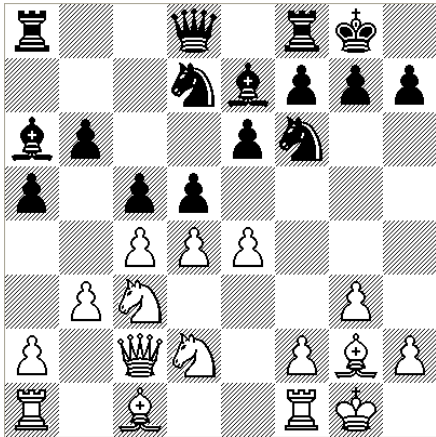
The attack had already been brought to an end. Nakamura now demonstrates his King can also be an attacking piece!

37. Kxh5 Be8+ 38. Kh6 Qe7 39. Rf4 Bf7 40. Qf6 Qf8+ 41. Kh7 Kb8 42. Rf2 e5 43. Qxe5 1-0

Nakamura Knockout

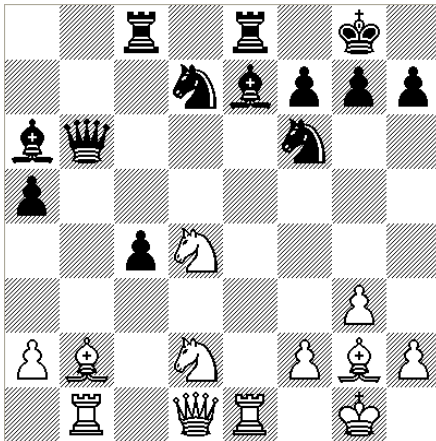
Michal Krasenkow (POL 2668)- Hikaru Nakamura (USA - 2648)

Round 2 - 2007.10.19 - ECO A14



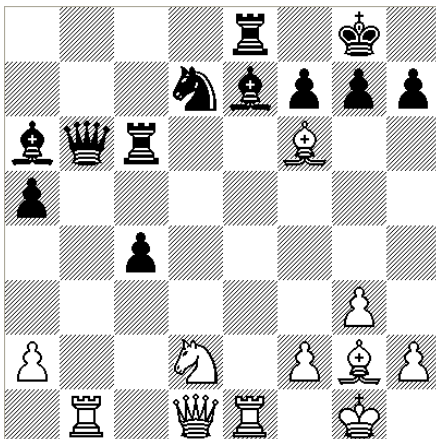
1. Nf3 Nf6 2. c4 e6 3. g3 d5 4. Bg2 Be7 5. O-O O-O
6. b3 a5 7. Nc3 c6 8. d4 Nbd7 9. Qc2 b6 10. e4 Ba6
11. Nd2 c5

After 11 moves not a piece or a pawn exchanged and the tension in the center is explosive.



12. exd5 cxd4 13. Nb5 exd5 14. Nxd4 Rc8 15. Re1 b5
16. Bb2 Re8 17. Qd1 bxc4 18. bxc4 Qb6 19. Rb1 dxc4

It's 8 moves later and Black has a pawn advantage, but White has a plan to counter attack with the discovered attack on the Queen on b6. It's not his fault Nakamura saw it and was prepared with a terrific counterpunch of his own making.



20. Nc6?? Rxc6 21. Bxf6?? (see diagram)

Two question marks? Twice in a row? Why? After all, Black's Queen is under direct attack, the Bishop on e7 is under double attack, and the Rook on c6 is under attack as well. What could go wrong in such a target rich environment?

How about Black's next move ... it's a knockout!!
21.... Qxf2+!!!

22. Kxf2 Bc5+ 23. Kf3 (23.Re3 also loses) Rxf6+ 24. Kg4 Ne5+
25. Kg5 (25.Rxe5 also loses) Rg6+ 26. Kh5 f6 27. Rxe5 Rxe5+
28. Kh4 Bc8 0-1